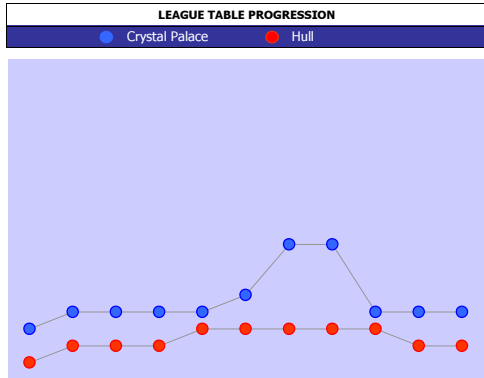
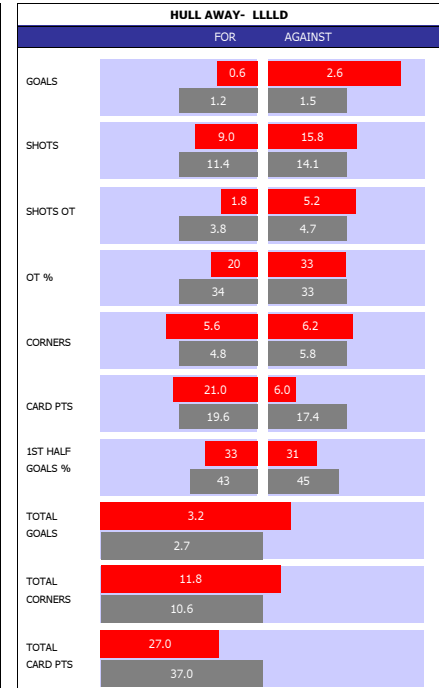
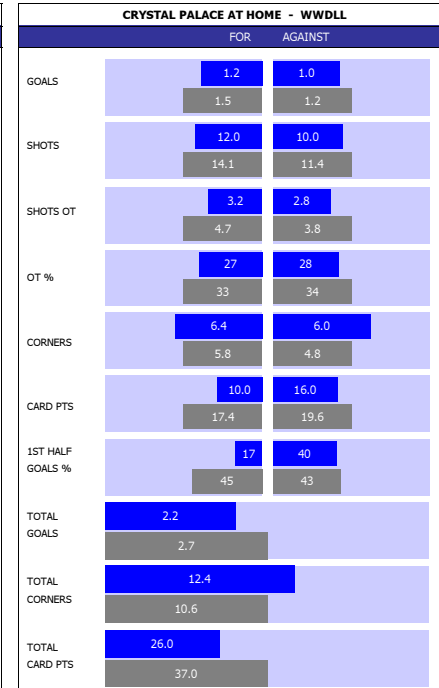
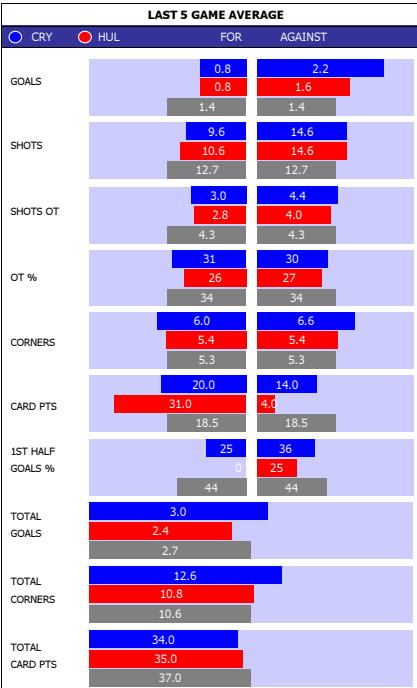


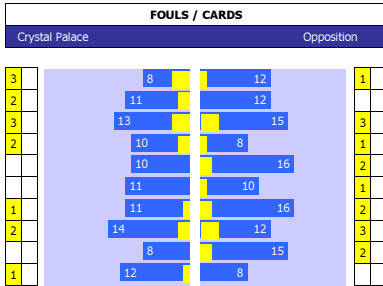
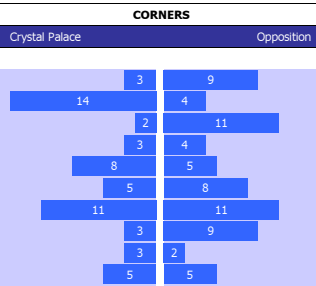
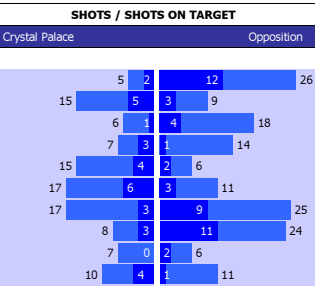
| ENGLISH PREMIER LEAGUE |                       |           |            |           |
|------------------------|-----------------------|-----------|------------|-----------|
| P                      | TEAM                  | PL        | GD         | PTS       |
| 1                      | Chelsea               | 35        | 46         | 84        |
| 2                      | Tottenham             | 35        | 48         | 77        |
| 3                      | Liverpool             | 36        | 29         | 70        |
| 4                      | Man City              | 35        | 33         | 69        |
| 5                      | Arsenal               | 35        | 26         | 66        |
| 6                      | Man United            | 35        | 24         | 65        |
| 7                      | Everton               | 36        | 19         | 58        |
| 8                      | West Brom             | 35        | -4         | 45        |
| 9                      | Leicester             | 35        | -9         | 43        |
| 10                     | Southampton           | 35        | -7         | 42        |
| 11                     | Bournemouth           | 36        | -13        | 42        |
| 12                     | West Ham              | 36        | -14        | 42        |
| 13                     | Stoke                 | 36        | -13        | 41        |
| 14                     | Burnley               | 36        | -14        | 40        |
| 15                     | Watford               | 35        | -21        | 40        |
| 16                     | <b>Crystal Palace</b> | <b>36</b> | <b>-15</b> | <b>38</b> |
| 17                     | Swansea               | 36        | -28        | 35        |
| 18                     | <b>Hull</b>           | <b>36</b> | <b>-33</b> | <b>34</b> |
| 19                     | Middlesbrough         | 36        | -22        | 28        |
| 20                     | Sunderland            | 35        | -32        | 24        |



| HEAD TO HEAD    |          |                |     |      |      |      |     |     |  |  |
|-----------------|----------|----------------|-----|------|------|------|-----|-----|--|--|
| DIV             | DATE     | H / A          | G   | S    | O    | C    | Y   | R   |  |  |
| EO              | 10-12-16 | Hull           | 3   | 15   | 6    | 4    | 2   | 0   |  |  |
|                 |          | Crystal Palace | 3   | 14   | 6    | 7    | 4   | 0   |  |  |
| EO              | 28-01-14 | Crystal Palace | 1   | 13   | 3    | 8    | 4   | 0   |  |  |
|                 |          | Hull           | 0   | 13   | 4    | 3    | 0   | 1   |  |  |
| EO              | 23-11-13 | Hull           | 0   | 15   | 2    | 11   | 2   | 0   |  |  |
|                 |          | Crystal Palace | 1   | 9    | 2    | 4    | 1   | 1   |  |  |
| E1              | 05-03-13 | Crystal Palace | 4   | 12   | 6    | 5    | 1   | 0   |  |  |
|                 |          | Hull           | 2   | 9    | 9    | 1    | 0   | 0   |  |  |
| E1              | 27-11-12 | Hull           | 0   | 4    | 3    | 3    | 1   | 0   |  |  |
|                 |          | Crystal Palace | 0   | 6    | 11   | 4    | 0   | 0   |  |  |
| PER GAME AVGE : |          |                | 2.8 | 22.0 | 10.4 | 10.0 | 3.0 | 0.4 |  |  |



| CRYSTAL PALACE 10 MATCH FORM |      |     |     |             |    |    |   |       |   |
|------------------------------|------|-----|-----|-------------|----|----|---|-------|---|
| SS                           | DATE | CMP | VEN | OPPOSITION  | T  | N  | R | SCORE |   |
| 16/17                        | 0605 | EPL | A   | Man City    | 4  | 4  | L | 5     | 0 |
| 16/17                        | 2904 | EPL | H   | Burnley     | 16 | 14 | L | 0     | 2 |
| 16/17                        | 2604 | EPL | H   | Tottenham   | 2  | 2  | L | 0     | 1 |
| 16/17                        | 2304 | EPL | A   | Liverpool   | 3  | 3  | W | 1     | 2 |
| 16/17                        | 1504 | EPL | H   | Leicester   | 11 | 9  | D | 2     | 2 |
| 16/17                        | 1004 | EPL | H   | Arsenal     | 6  | 5  | W | 3     | 0 |
| 16/17                        | 0504 | EPL | A   | Southampton | 13 | 10 | L | 3     | 1 |
| 16/17                        | 0104 | EPL | A   | Chelsea     | 1  | 1  | W | 1     | 2 |
| 16/17                        | 1803 | EPL | H   | Watford     | 13 | 15 | W | 1     | 0 |
| 16/17                        | 0403 | EPL | A   | West Brom   | 8  | 8  | W | 0     | 2 |



| CRYSTAL PALACE |                     |     |    |     | HULL |                  |     |   |     |
|----------------|---------------------|-----|----|-----|------|------------------|-----|---|-----|
| P              | PLAYER              | APP | S  | GLS | P    | PLAYER           | APP | S | GLS |
| G              | Wayne Hennessey     | 27  | 0  | 0   | G    | Eldin Jakupovic  | 21  | 0 | 0   |
| G              | Steve Mandanda      | 9   | 0  | 0   | G    | David Marshall   | 19  | 0 | 0   |
| D              | Joel Ward           | 36  | 0  | 0   | D    | Andrew Robertson | 30  | 1 | 1   |
| D              | Patrick van Aanholt | 27  | 3  | 4   | D    | Ahmed Elmohamady | 27  | 4 | 0   |
| D              | Martin Kelly        | 23  | 4  | 0   | D    | Harry Maguire    | 24  | 4 | 2   |
| D              | Damien Delaney      | 21  | 8  | 0   | D    | Curtis Davies    | 24  | 0 | 0   |
| D              | James Tomkins       | 21  | 1  | 3   | D    | Andrea Ranocchia | 18  | 1 | 2   |
| D              | Scott Dann          | 19  | 4  | 3   | D    | Michael Dawson   | 17  | 3 | 3   |
| M              | Jason Puncheon      | 33  | 1  | 0   | M    | Sam Clucas       | 34  | 1 | 2   |
| M              | Andros Townsend     | 29  | 6  | 3   | M    | Tom Huddlestone  | 22  | 8 | 1   |
| M              | Yohan Cabaye        | 24  | 7  | 4   | M    | Kamil Grosicki   | 20  | 9 | 4   |
| M              | James McArthur      | 23  | 4  | 5   | M    | Alfred N'Diaye   | 14  | 6 | 1   |
| M              | Joe Ledley          | 13  | 5  | 1   | M    | Lazar Markovic   | 12  | 0 | 2   |
| M              | Luka Milivojevic    | 12  | 0  | 1   | M    | Ryan Mason       | 11  | 5 | 1   |
| F              | Christian Benteke   | 34  | 0  | 14  | F    | Abel Hernandez   | 16  | 8 | 4   |
| F              | Wilfried Zaha       | 32  | 1  | 6   | F    | Adama Diomande   | 13  | 9 | 2   |
| F              | Connor Wickham      | 4   | 4  | 2   | F    | Oumar Niasse     | 10  | 5 | 4   |
| F              | Loic Remy           | 1   | 4  | 0   | F    | Dieumeri Mbokani | 8   | 4 | 0   |
| F              | Fraizer Campbell    | 0   | 11 | 1   | F    | Will Keane       | 4   | 1 | 0   |

| HULL 10 MATCH FORM |      |     |     |               |    |    |   |       |   |
|--------------------|------|-----|-----|---------------|----|----|---|-------|---|
| SS                 | DATE | CMP | VEN | OPPOSITION    | T  | N  | R | SCORE |   |
| 16/17              | 0605 | EPL | H   | Sunderland    | 20 | 20 | L | 0     | 2 |
| 16/17              | 2904 | EPL | A   | Southampton   | 9  | 10 | D | 0     | 0 |
| 16/17              | 2204 | EPL | H   | Watford       | 10 | 15 | W | 2     | 0 |
| 16/17              | 1504 | EPL | A   | Stoke         | 13 | 13 | L | 3     | 1 |
| 16/17              | 0804 | EPL | A   | Man City      | 4  | 4  | L | 3     | 1 |
| 16/17              | 0504 | EPL | H   | Middlesbrough | 19 | 19 | W | 4     | 2 |
| 16/17              | 0104 | EPL | H   | West Ham      | 12 | 12 | W | 2     | 1 |
| 16/17              | 1803 | EPL | A   | Everton       | 7  | 7  | L | 4     | 0 |
| 16/17              | 1103 | EPL | H   | Swansea       | 16 | 17 | W | 2     | 1 |
| 16/17              | 0403 | EPL | A   | Leicester     | 15 | 9  | L | 3     | 1 |

